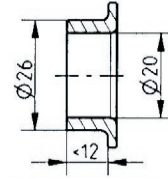
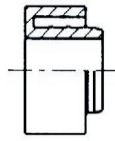
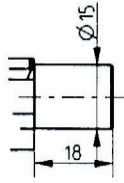




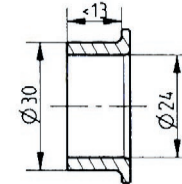
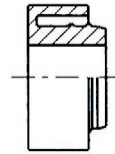
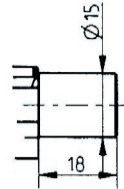
12mm Boiler Seals For Use With A Welded Boiler Stub

Part Number:

M04966



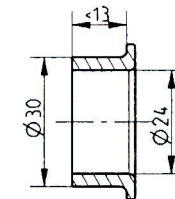
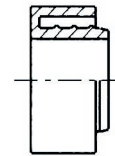
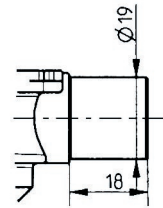
M06432



14mm Boiler Seals For Use With A Welded Boiler Stub

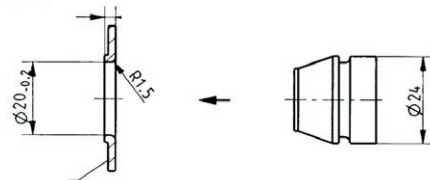
Part Number:

M05000



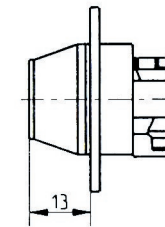
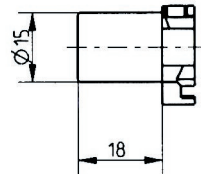
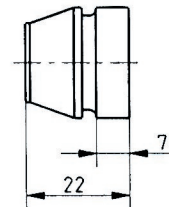
12mm Boiler Seals For Use With A Punched Boiler Hole

Punched Hole Dimensions:



Part Number:

M06723



Blanking Seal

M06779

