

Product Information

Cartridge valve body adapter



A.u.K. Müller

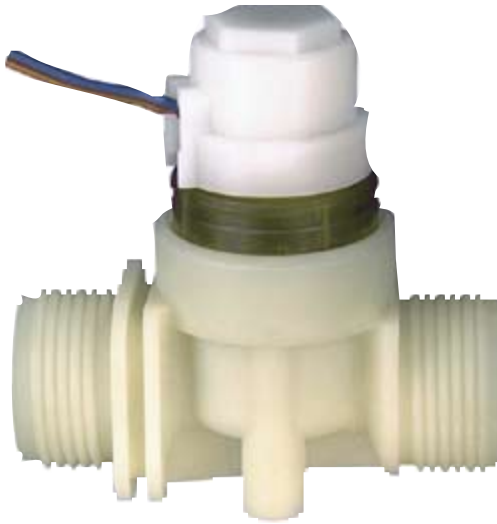
Solenoid valves
Control valves
Special valves and systems

A.u.K. Müller GmbH & Co. KG
Dresdener Str. 162
D-40595 Düsseldorf/Germany

Tel.: +49(0)211-7391-0
Fax: +49(0)211-7391-281

e-mail: info@akmueller.de
<http://www.akmueller.de>

50.007.126



Characteristics

- long term performance capability
- easy to assemble and service
- standard connection
- any fitting position
- high operating safety through the use of high quality and 100% final testing of the products

Applications

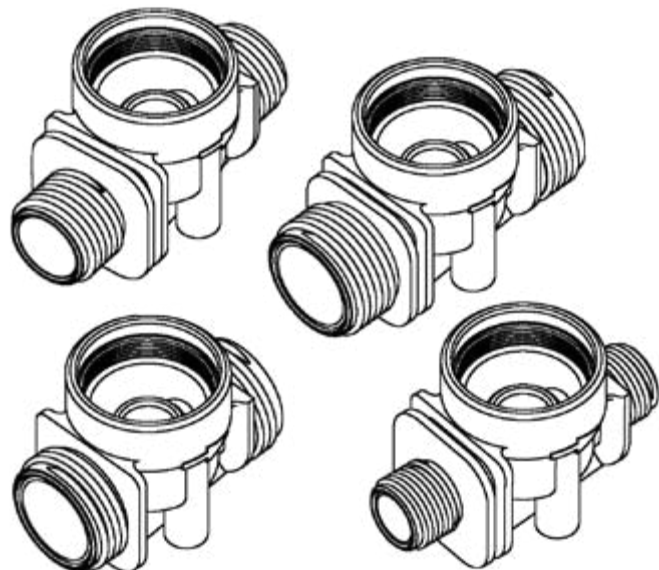
- sanitary fittings
- irrigation systems
- industrial appliances

Description

The valve body adapter for use with cartridge valves of series 050... allows a variety of common inlet and outlet connections.

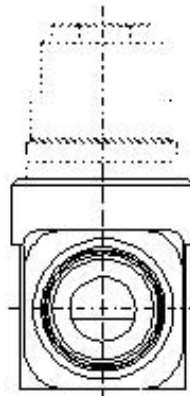
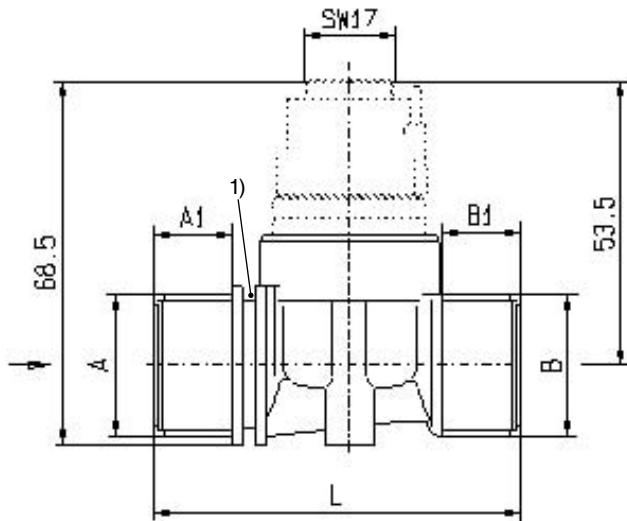
The screw-in version simplifies assembly, service and check of the valve.

The body adapter is made of PPE.





50.007.126



Technical Data

Type	cartridge valve housing	
Construction	for cartridge screw-in valves	
Fitting position	any	
Media	cold and heated potable water and physically and chemically similar media	
T-Medium	5 - 70	°C.
T-Ambient	5 - 60	°C
DN	7	mm
p-Operating	0,5 - 8,0	bar
Max.pressure	25	bar (without function of valve)

Materials

Valve body	PPE
------------	-----



Options

Inlet		1) Fixing groove	Outlet		Length
A	A 1		B	B 1	L
G 3/4	10	no	G 3/4	10	55
G 3/4	14,5	yes	G 3/4	14,5	68
G 3/4	18	yes	G 3/4	18	75
G 1/2	15	yes	G 1/2	15	69
G 3/8	13	yes	G 3/8	13	65

Further mounting variants and different angled outlets on request.