

Product Information

Flow regulator



A.u.K. Müller

Solenoid valves
Control valves
Special valves and systems

A.u.K. Müller GmbH & Co. KG
Dresdener Str. 162
D-40595 Düsseldorf/Germany

Tel.: +49 211 7391-0
Fax: +49 211 7391-281

e-mail: info@akmueller.de
Internet: www.akmueller.de

Series MR

MR04		Tm: 65 °C (149 °F) max.
MR 05		Tm: 65 °C (149 °F) max.
MR 06		Tm: 65 °C (149 °F) max.
MR 07		Tm: 65 °C (149 °F) max.
MR 19		Tm: 98 °C (208 °F) max.
MR 12		Tm: 90 °C (194 °F) max.

Characteristics

- reduced water consumption
- constant flow rate
- reduced decrease of pressure in water conduits used by several consumers
- compensation of pressure surge

Applications

- solenoid valves
- sanitary faucets
- instantaneous water heaters
- vending machines
- eye wash

Description

Flow regulators maintain a defined flow independent from the supplies pressure. They are recommended to ensure a uniform distribution of water also in case of pressure fluctuations.

Pressure differences might be caused by level differences in multistorey buildings as well as if showers are taken simultaneously e.g. in commercial shower applications.

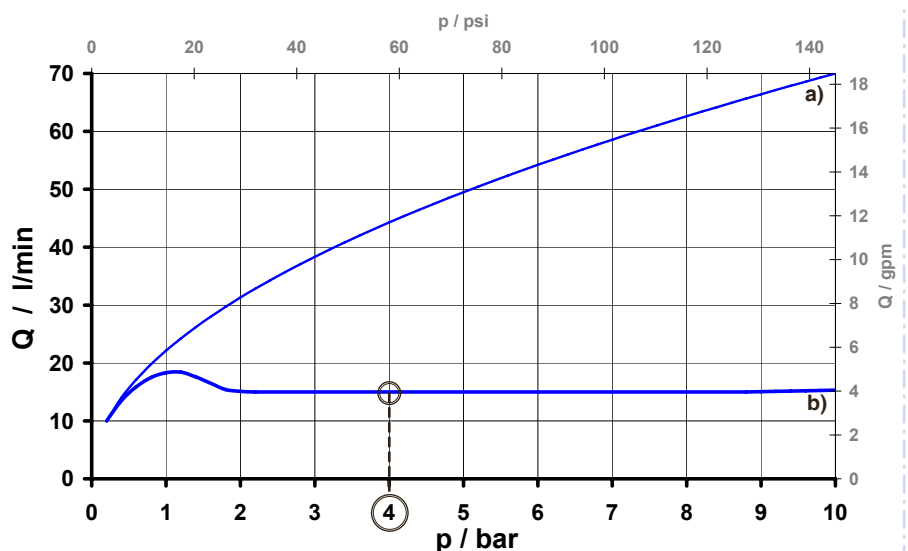
Flow regulators are usually installed directly into the inlet of faucets, flow heaters, solenoid valves, or similar. Depending on the valves design, they can be placed in the inlet, in the valve seat or in the outlet nozzle.

In a lot of applications flow limitations are already standard (e.g. 6 l/min or 8 l/min for faucets).

In addition to the constant water supply, the user saves water while keeping the accustomed comfort using washstand or shower.

typical performance curve

- a) without flow regulator
b) with flow regulator
nominal flow rate defined at 4 bar





MR 04

Ø 19,0 mm (for G 3/4 valve inlet / adapter plug-in contour)

star-shaped regulating element: POM

socket: PA

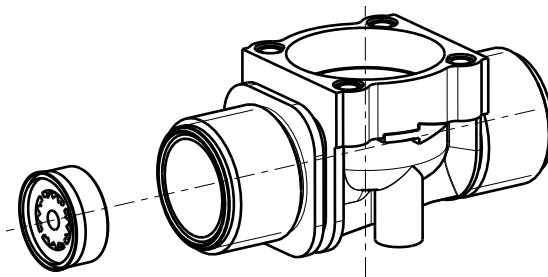
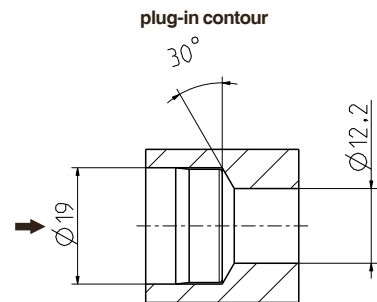
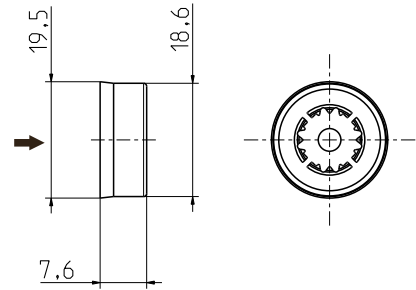
regulating element / elastomer EPDM

p-operating: 1 - 10 bar (14,5 - 145 psi)

T-medium: 65 °C max.

nominal flow rate at 4 bar

Q [l/min]	Q [USgal/min]	tolerance	Id.-No.	outlet side view inlet	colour code
5,0	1,32	± 15 %	003177		red
8,0	2,11	± 15 %	003178		black
10,0	2,64	± 15 %	003179		white
12,0	3,17	± 15 %	003180		orange
14,0	3,70	± 15 %	003181		light blue
15,0	3,96	± 15 %	003182		purple
16,0	4,23	± 15 %	003183		grey
18,0	4,76	± 15 %	003172		brown
20,0	5,28	± 15 %	003173		green



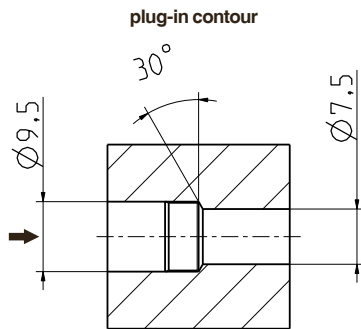
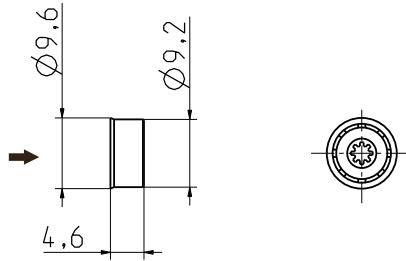
MR 05

Ø 9,5 mm (for G 3/8 and G 1/2 valve inlet / angled valve with seat DN 10 / plug-in contour)

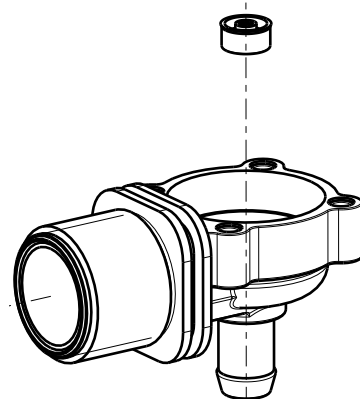
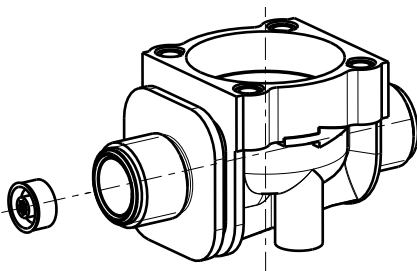
star-shaped regulating element: POM
 socket: POM
 regulating element / elastomer: EPDM

p-operating: 1 - 10 bar
 T-medium: 65 °C max.

nominal flow rate at 4 bar



Q [l/min]	Q [USgal/min]	tolerance	Id.-No.	outlet side view inlet	color code
0,5	0,13	± 50%	003387		yellow
1,0	0,26	± 30%	004703		pink
1,4	0,37	± 25%	003174		light blue
1,9	0,50	± 25%	004275		black
2,5	0,66	± 20%	003175		green
3,0	0,79	± 20%	004184		purple
3,5	0,93	± 20%	004830		dark blue
5,0	1,32	± 20%	003084		red
8,0	2,11	± 20%	003176		white
9,0	2,38	± 20%	004756		orange





MR 06

Ø 19,0 mm (for G 3/4 valve inlet / plug-in contour)

star-shaped regulating element: POM
 socket: POM
 regulating element / elastomer: EPDM

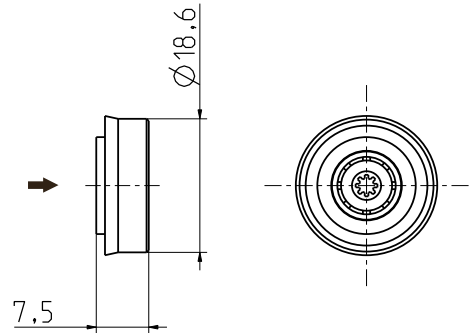
p-operating: 1 - 10 bar
 T-medium: 65 °C

nominal flow rate at 4 bar

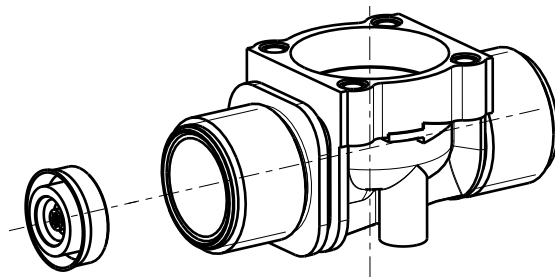
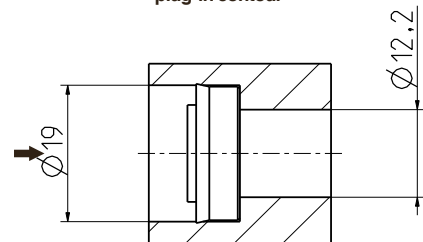
Q [l/min]	Q [USgal/min]	tolerance	Id.-No.	outlet side view inlet	colour code
0,5	0,13	± 50 %	004327		yellow
1,0	0,26	± 30 %	004833		pink
1,4	0,37	± 25%	004328		light blue
1,9	0,50	± 25%	004329		black
2,5	0,66	± 20%	004330		green
3,0	0,79	± 20%	004331		purple
3,5	0,93	± 20%	004832		dark blue
5,0	1,32	± 20%	006598		red
8,0	2,11	± 20%	-		white
9,0	2,38	± 20%	004335		orange

MR 05

MR 06



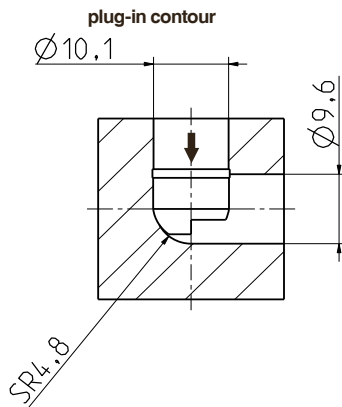
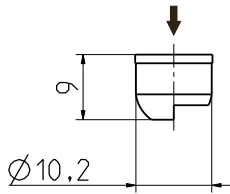
plug-in contour





MR 05

MR 07



MR 07

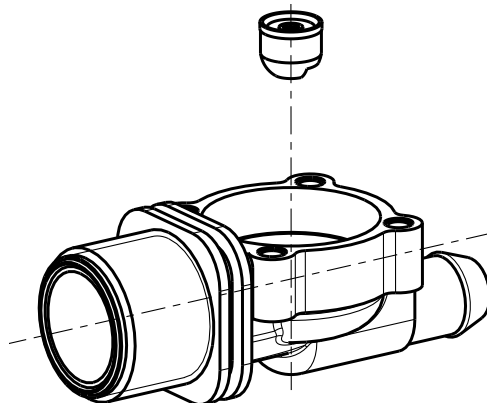
Ø 10 mm (straight-through valve seat DN 10 / plug-in contour)

star-shaped regulating element: POM
 socket: POM
 regulating element / elastomer: EPDM

p-operating: 1 - 10 bar
 T-medium: 65 °C max.

nominal flow rate at 4 bar

Q [l/min]	Q [USgal/min]	tolerance	Id.-No.	outlet side view inlet	colour code
0,5	0,13	± 50%	005304		yellow
1,0	0,26	± 30%	005305		pink
1,4	0,37	± 25%	005306		light blue
1,9	0,5	± 25%	005307		black
2,5	0,66	± 20%	005308		green
3,0	0,79	± 20%	005309		pruple
3,5	0,93	± 20%	005310		dark blue
5,0	1,32	± 20%	005311		red
8,0	2,11	± 20%	005312		white
9,0	2,38	± 20%	005313		orange






MR 19

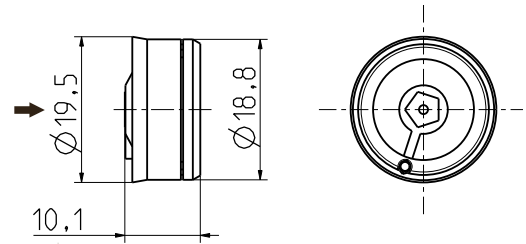
Ø 19,0 mm (for G 3/4 valve inlet / plug-in contour)

star-shaped regulating element: PEI
 socket: PEI
 regulating element / elastomer: EPDM

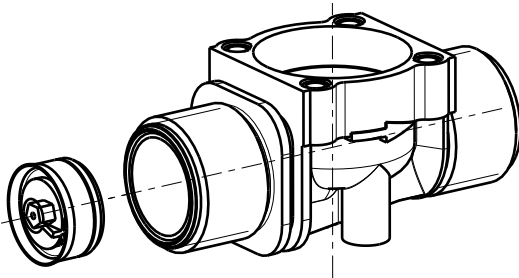
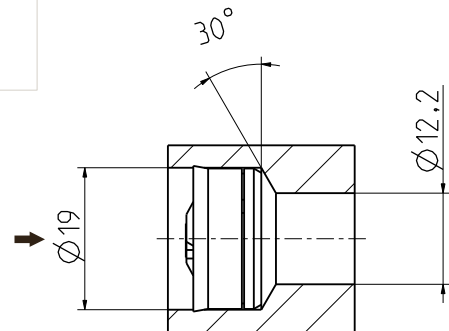
p-operating: 1 - 10 bar
 T-medium: 98 °C max.

nominal flow rate at 4 bar

Q [l/min]	Q [USgal/min]	tolerance	Id.-No.	inlet side view outlet
5,0	1,3	± 15 %	006905	 <p>US-patent no. 5 899 224</p>
8,0	2,1	± 15 %	006834	
10,0	2,6	± 15 %	006588	
12,0	3,1	± 15 %	006799	
15,0	3,7	± 15 %	006899	
16,0	3,9	± 15 %	006923	
18,0	4,2	± 15 %	007556	
20,0	4,8	± 20 %	006900	
22,0	5,3	± 20 %	006901	



plug-in contour




MR 12

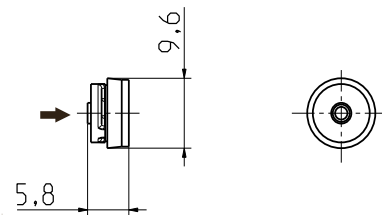
Ø 9,5 mm (for G 3/8 and G 1/2 valve inlet / angled valve with seat DN 10 / plug-in contour)

star-shaped regulating element: PA 6/6
 regulating element / elastomer: NBR

p-operating: 1 - 10 bar
 T-medium: 90 °C max.

nominal flow rate at 4 bar

Q [l/min]	Q [USgal/min]	tolerance	Id.-No.	inlet side view outlet
5	1,32	± 20%	008079	



plug-in contour

