

Product Information

Dispense valve



A.u.K. Müller

Solenoid valves
Control valves
Special valves and systems

A.u.K. Müller GmbH & Co. KG
Dresdener Str. 162
D-40595 Düsseldorf/Germany

Tel.: +49(0)211-7391-0
Fax: +49(0)211-7391-281

e-mail: info@akmueller.de
<http://www.akmueller.de>

Series 06.003



Characteristics

- modular design
- easy to assemble and service
- each inlet has a manual adjuster to regulate flow and bubble size
- high quality materials ensure no taste or taint of the medium
- prevention against beverage contamination caused by undesirable build of oxidation

Applications

Beverage dispensers for

- soda water (premixed with CO₂)
- aerated water O₂ (premixed with O₂)
- fruit juice of low viscosity (premixed with CO₂)

Description

Dispensers of sparkling, still or aerated water are becoming more common in hospitals, old people's homes and other public places.

This solenoid valve is specially designed to meet the requirements of such dispensers. Available with up to 4 separate inlets, where flow can be individually adjusted, enabling the dispense of different drinks.

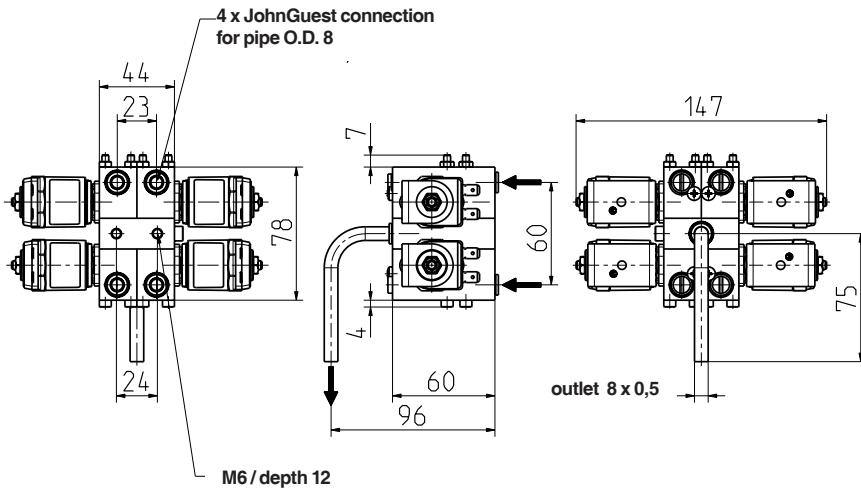
The inlets can have hose connectors or JohnGuest cartridges.

The use of high quality materials such as acrylic and stainless steel for all parts in contact with the medium ensure there are no taste or taint problems.





Series 06.003

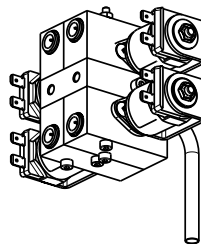


Technical Data

Type	solenoid dispense valve	
Construction	modular valve, direct acting	
Function	NC (normally closed)	
Fitting position	any	
Media	water, soda-water and juice (low viscosity)	
T-Medium	30	°C max.
T-Ambient	60	°C max.
DN	3	mm
p-Operating	0 - 7	bar
Flow rate	5	l/min max.
Flow regulator	manually adjustable	
Coil type	MS.006	
Nominal voltages	24	V AC 50 Hz
	24	V AC 60 Hz
	other voltages on request	
Voltage tolerance	+10% -15%	
Duty cycle	100%	
Nominal power	8,5 W	13 VA (AC only)
Protection Type	IP 00	
Coil connections	flat tabs 6,3 x 0,8 mm	
Insulation class	F	according to EN 60730
Protection class	I	according to EN 60730 (for incorporation in class I)

Materials

Valve body	acryl glass
Plunger guide	stainless steel
Plunger and spring	stainless steel
Short circuit ring	silver
Outlet pipe	stainless steel
Membrane and sealings	EPDM
Coil coating	PBT,PET or epoxy resin



Options

Other inlet connections on request.
 Versions of 1, 2, 3, or 4 separate inlets, please refer to the following pages. ▶

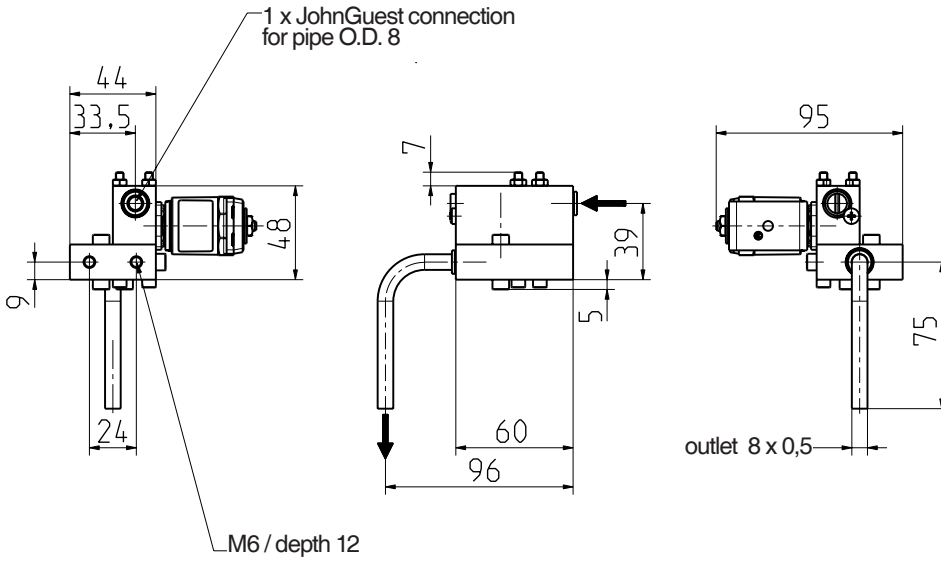
Product Information

Dispense valve

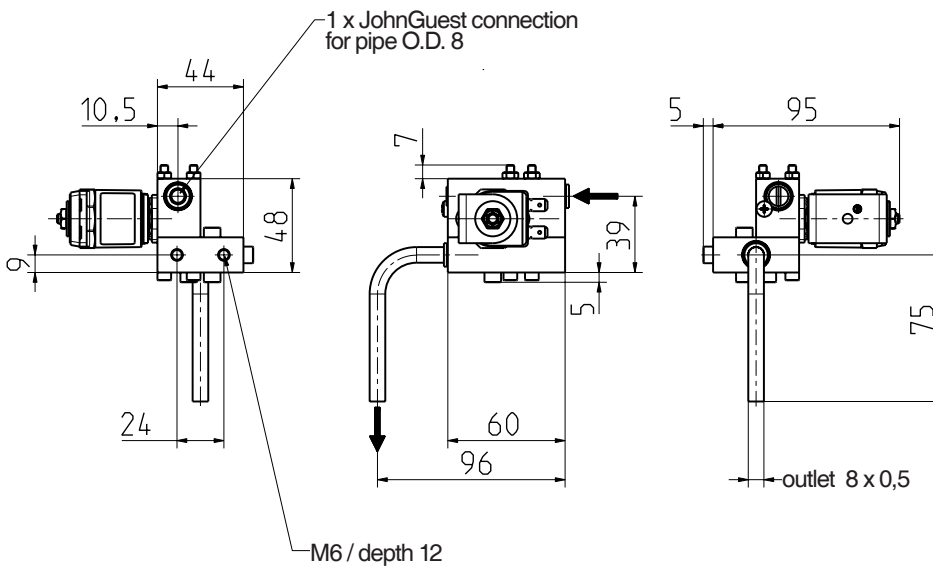
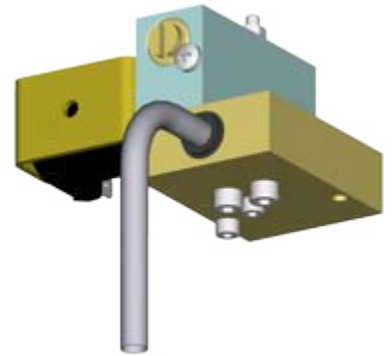


A.u.K. Müller

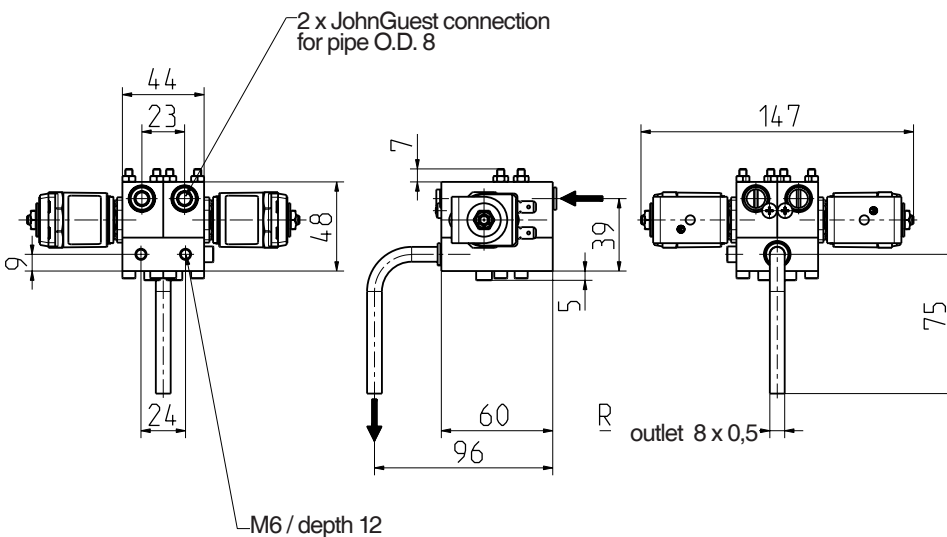
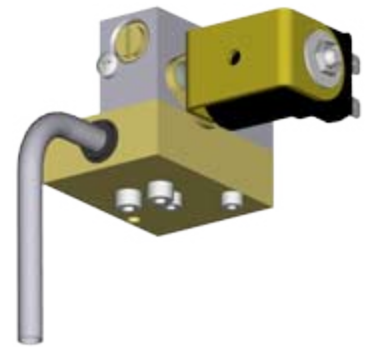
Series 06.003



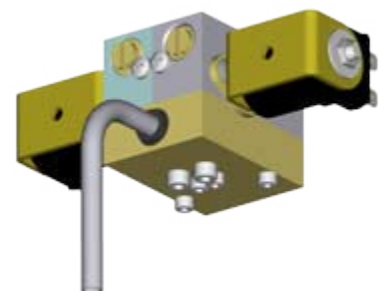
06.003.110



06.003.120



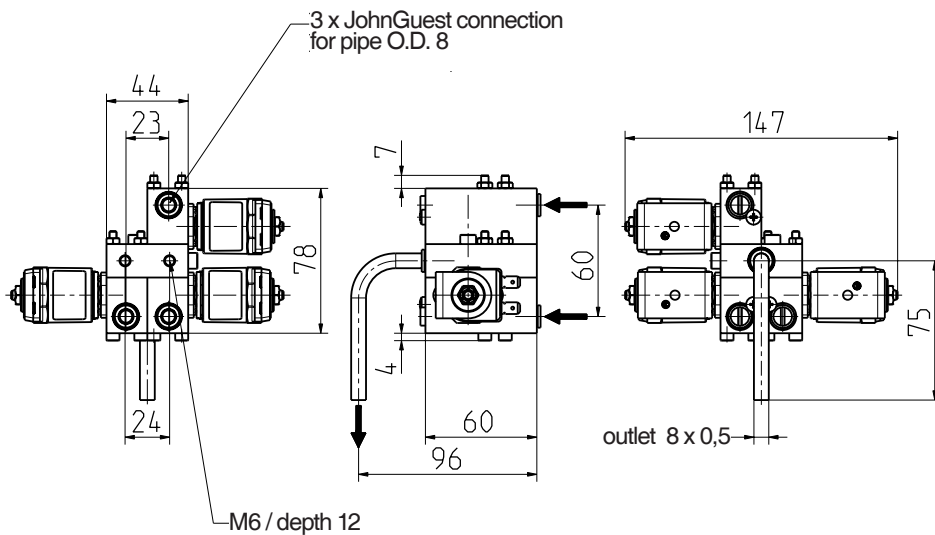
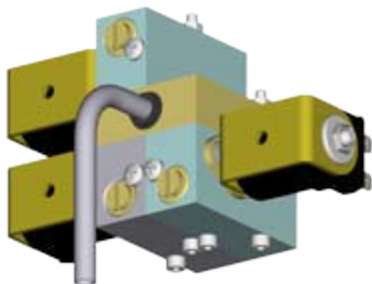
06.003.200



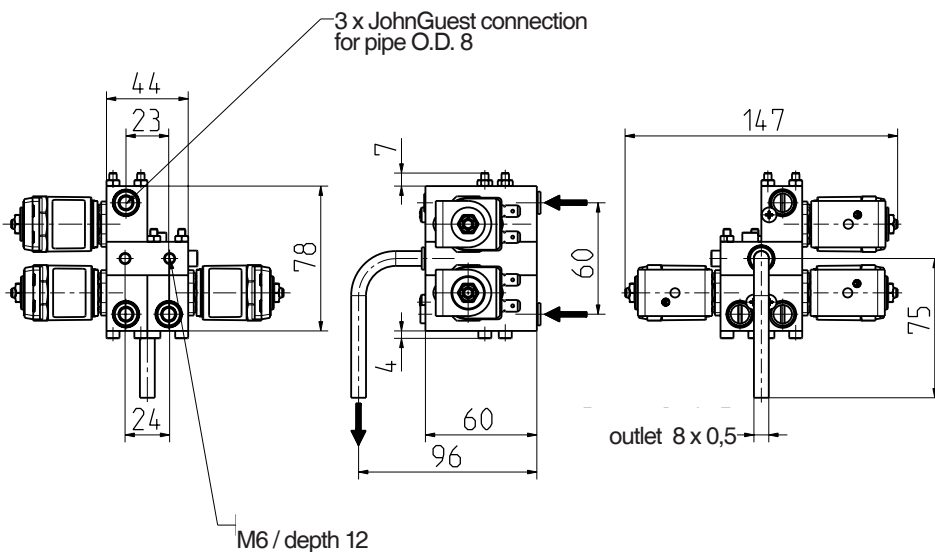
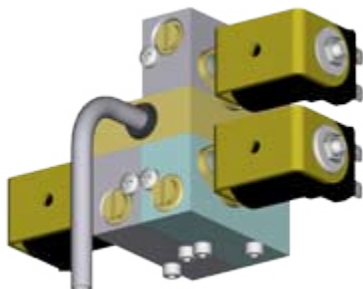


Series 06.003

06.003.310



06.003.320



06.003.400

