



**Series 50.005.102**



**Characteristics**

- Servo-controlled
- Pre tested functional unit
- Long term performance capability
- Compact design
- Optimized flow factor Kv for DN 5
- Optimized water hammer characteristic by low noise emission according to EN 60730 and EN 15091
- Easy to assemble and service
- Standard connection
- Cylindrical design
- Low power consumption
- Any fitting position
- Suitable for spray and jet water
- High operating safety through the use of high quality material
- Hygiene benefit by 100% final testing with air

**Applications**

- Sanitary fittings
- Electronic faucets
- Irrigation systems
- Industrial appliances
- Pilot system for valves with a larger nominal diameter

**Description**

2/2-way solenoid cartridge servo controlled valve of DN 5 in bi stable version, to be used particularly in electronically controlled, battery driven sanitary fittings.

The power consumption is minimised by the use of impulse control (pwm) to increase long term performance, durability and battery life.

The design outline had been reduced so far that integration in appropriate components, while using a minimum amount of space, is given.

Positive properties are extended due to the simple "screw in" version, which supports easy assembly, service and tests by the customer.

The design of a separate valve seat by the customer is not to apply, as otherwise is needed, if a pilot valve will solely be used.

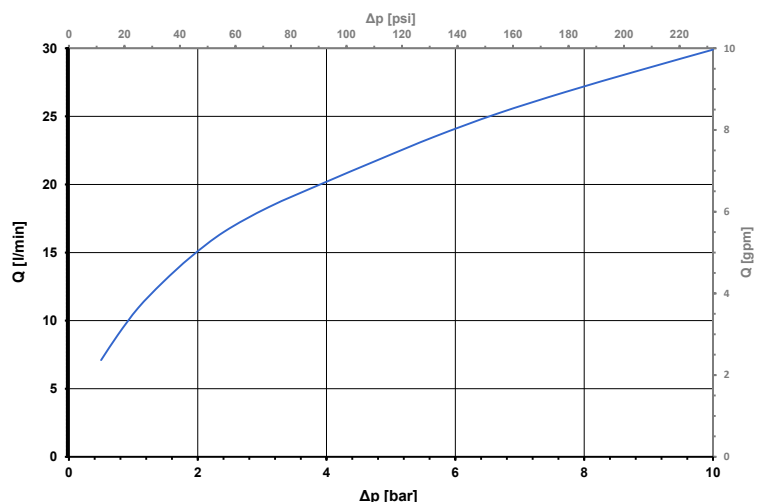
The rate of flow of the cartridge valve has been optimized in such a way, that the nominal diameter of DN 5 fulfils the standard requirements for sanitary tap ware.

**Available Approvals**

Approved versions available on request:

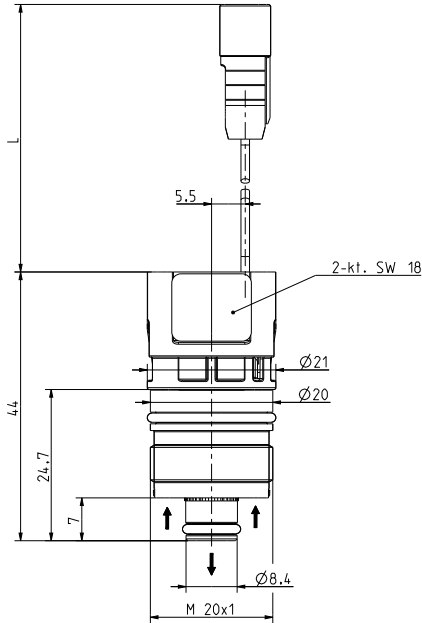
- KTW/W270
- WRAS
- ACS
- NSF 61
- Others on request

Typical Performance Curve





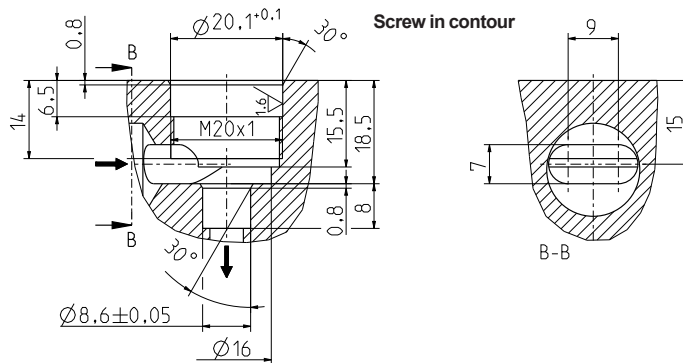
### Series 50.005.102



O-Rings are to be greased before screw-in.



Max. torque for screw-in: 1Nm

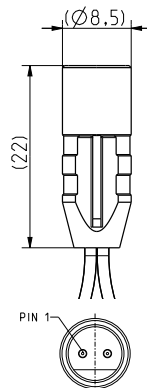


### Materials

Valve body	PA 6/6
Seal support	PPSU
Valve body cleading	stainless steel
Plunger guide	LCP
Plunger	stainless steel
Membrane and sealings	EPDM
Filter (inlet)	stainless steel (in inlet)

### Options

Connection type	standard cable length L	ID
with leads and connector	85 ± 5 mm	62710
others on request		



### Male connector

**Polarity of connector:**  
strand color **RED** Pin 1  
strand color **BLACK**

PLUS(+) pulse to open  
MINUS(-)

### Technical Data

Type	cartridge valve	
Construction	2/2-way screw-in, servo controlled	
Function	bi stable, pulse controlled	
Connection	thread M20 x 1	
Fitting position	any	
Media	cold and heated potable water and physically and chemically similar media	
T-Medium	5 - 70	°C
T-Ambient	5 - 60	°C
DN	5	mm
p-Operating	0,5 - 10,0	bar
Flow Factor (Kv)	10	l/min
Pressure surge	according to EN 60730	
Burst pressure	according to EN 60730	
Nominal voltage	6	V DC
	other voltages on request	
Operating voltage	4,0 - 6,9 V DC open/close at T-Ambient 25 °C	
Pulse shape/time		
Nominal power	1,4 W at Un	(< 1,0 W at U = 5 V)
Protection Type	IP 65	higher IP-classes on request
Insulation class	B	according to EN 60730

Good resistance to thermal (e.g., T-medium 80 °C / 10 minutes) and chemical disinfection.

Testing according EN 15091 and adjustment of the valve in the fitting upon request.