



**Series 51.005.125**



**Characteristics**

- Servo-controlled
- Pretested functional unit
- Long term performance capability
- Internal triple pollution protection
- Compact design
- Optimized water hammer characteristic by low noise emission according to EN 60730
- Easy to assemble and service
- Low power consumption
- Any fitting position
- High operating safety through the use of high quality and 100% final testing of the products

**Applications**

- Sanitary tap-ware

**Approvals**

Approved versions available on request:



- KTW-BWGL System 1+
- ACS
- WRAS
- NSF 61

**Description**

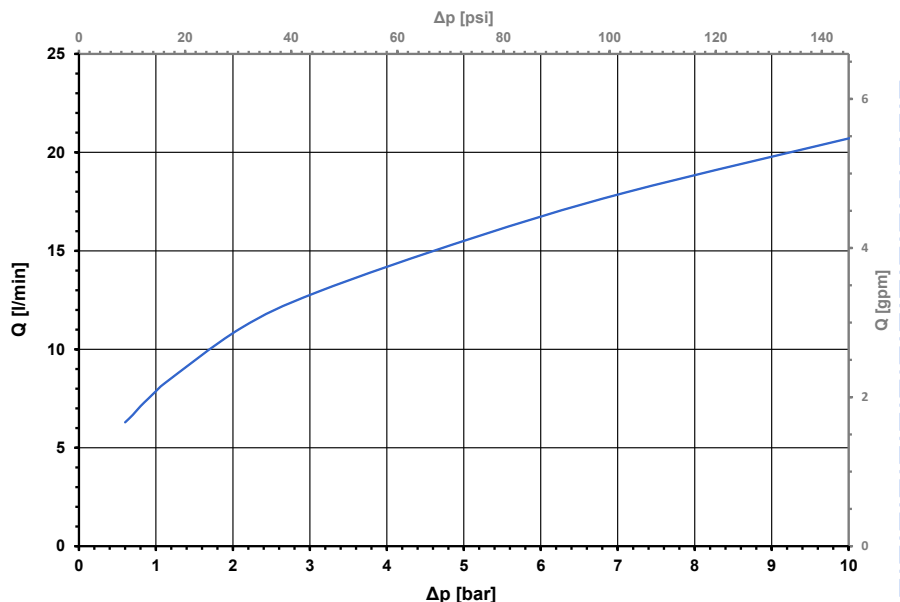
2/2-way solenoid servo controlled valve of DN 5, to be used particularly in electronically controlled sanitary fittings as bi stable (latching) and monostable version.

The power consumption is minimised by the use of impulse control to increase long term performance, durability and battery life.

The design outline had been reduced so far that integration in appropriate components, while using a minimum amount of space, is given. There is no need to design a valve seat by the user.

For easy integration various connection options are available. As inlet either a plug-in or flange connector with an integrated filter for pre-filtering are obtainable. Alternatively 6 or 8 mm push-fit connectors are offered, for which the pre-filtering has to be carried out on site. For the outlet either a plug-in connector or push-fit connectors with 6 or 8 mm are available.

Typical Performance Curve  
Inlet/outlet: plug-in connector (ID 64561)





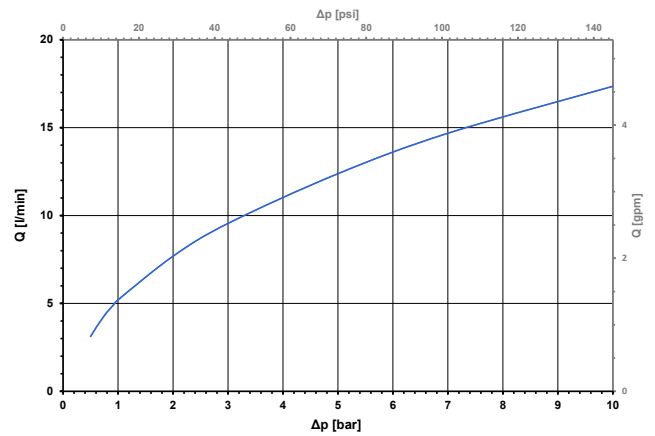
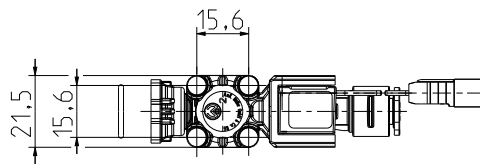
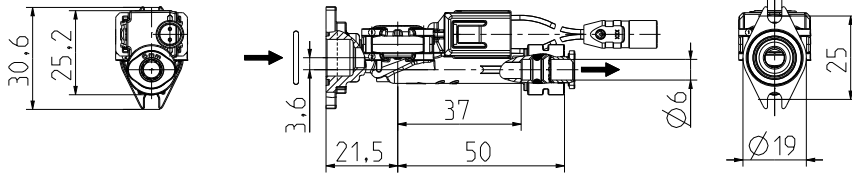


**Series 51.005.125**

**Optional connection variants**

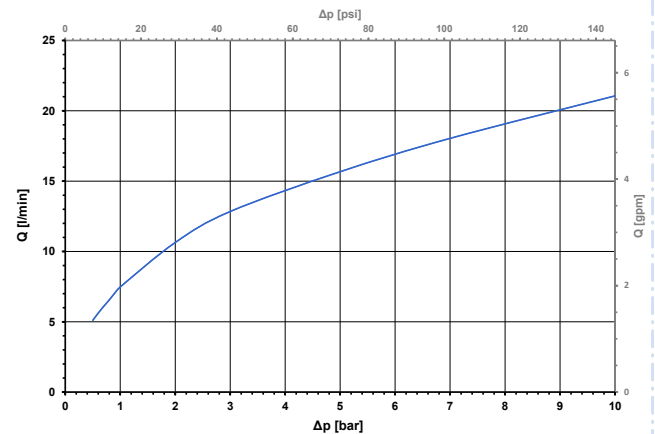
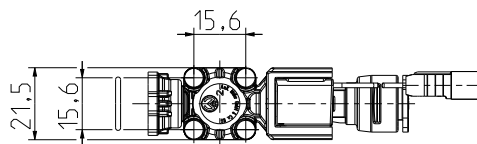
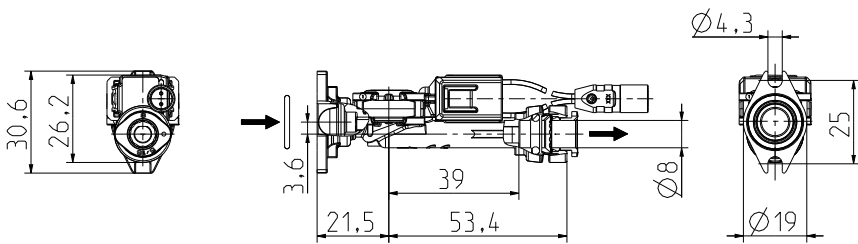
Inlet: flange with stainless steel sieve for pre-filtering

Outlet: 6 mm push-fit connector



Inlet: flange with stainless steel sieve for pre-filtering

Outlet: 8 mm push-fit connector

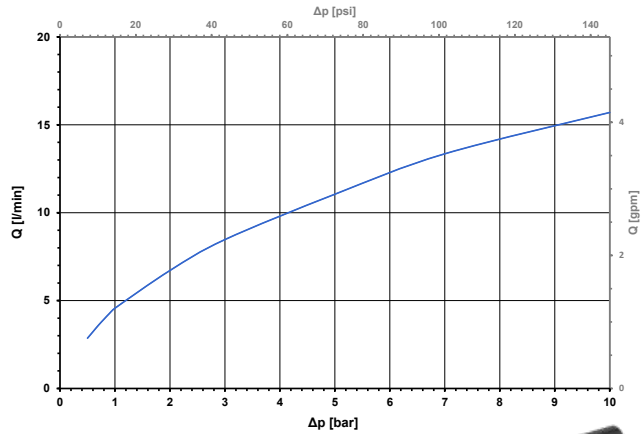
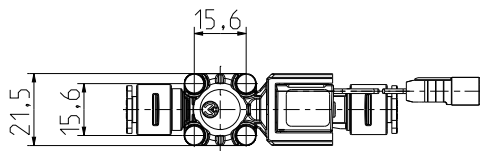
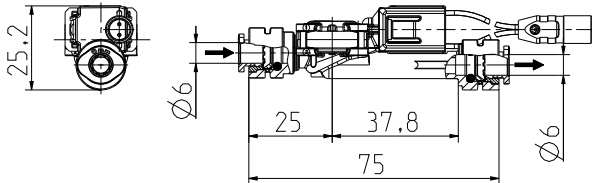




## Series 51.005.125

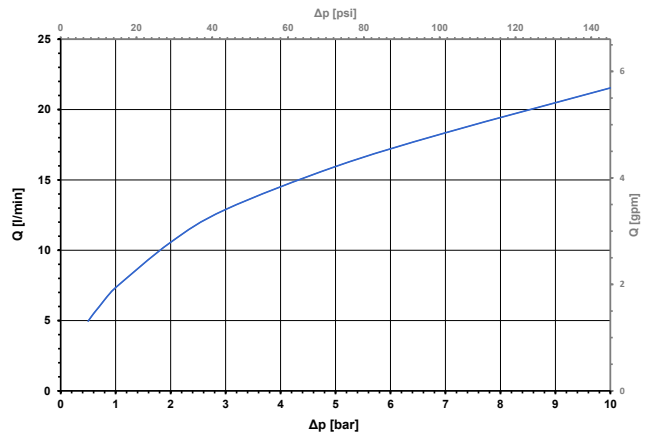
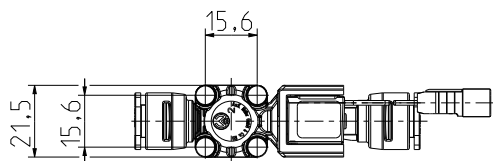
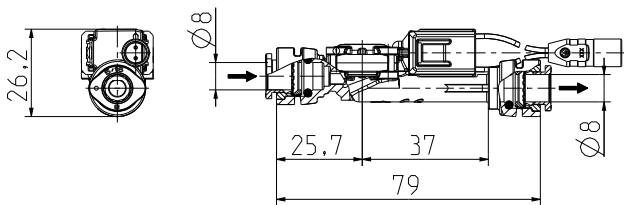
Inlet/outlet: 6 mm push-fit connector

Measures for pre-filtering have to be carried out on site.



Inlet/outlet: 8 mm push-fit connector

Measures for pre-filtering have to be carried out on site.



## Coil connection

### Pin plug

#### Polarity of plug / bistable, pulse controlled:

Wire colour **RED** Pin 1 PLUS(+) for opening pulse  
 Wire colour **BLACK** MINUS(-)

#### Polarity of plug / monostable (NC):

Wire colour **RED** Pin 1 PLUS(+)  
 Wire colour **BLUE** MINUS(-)

